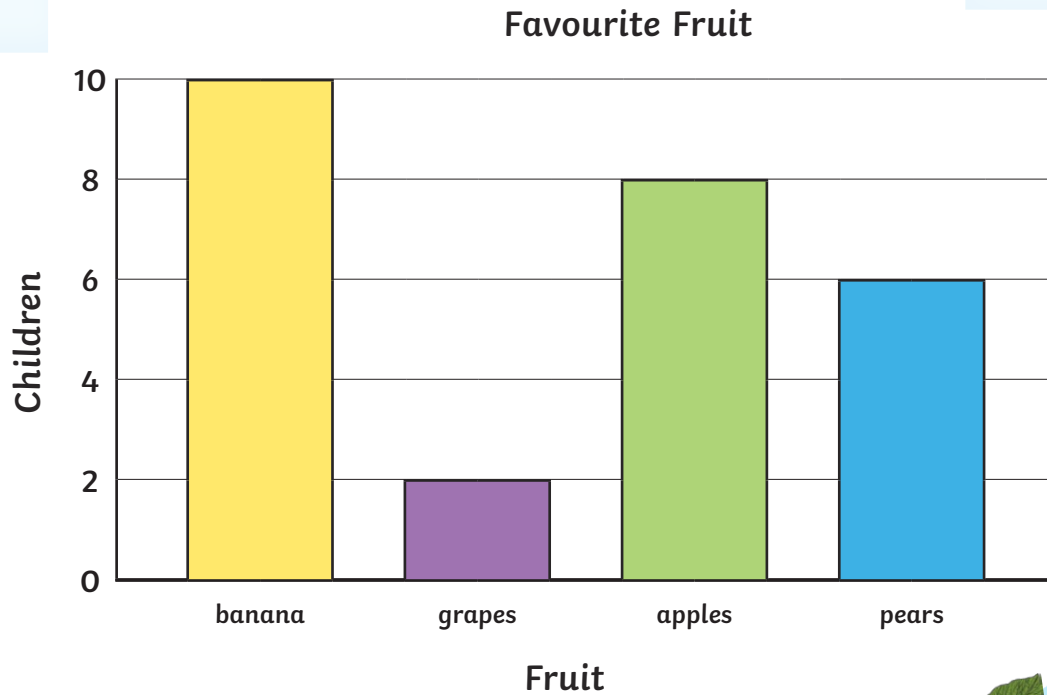
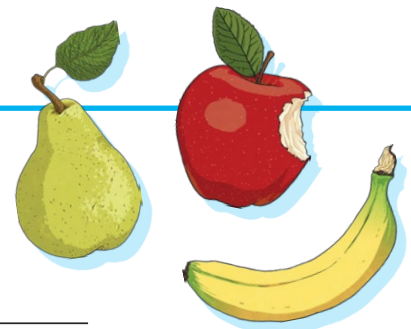


Interpreting Scaled Bar Charts



Answer the following questions.

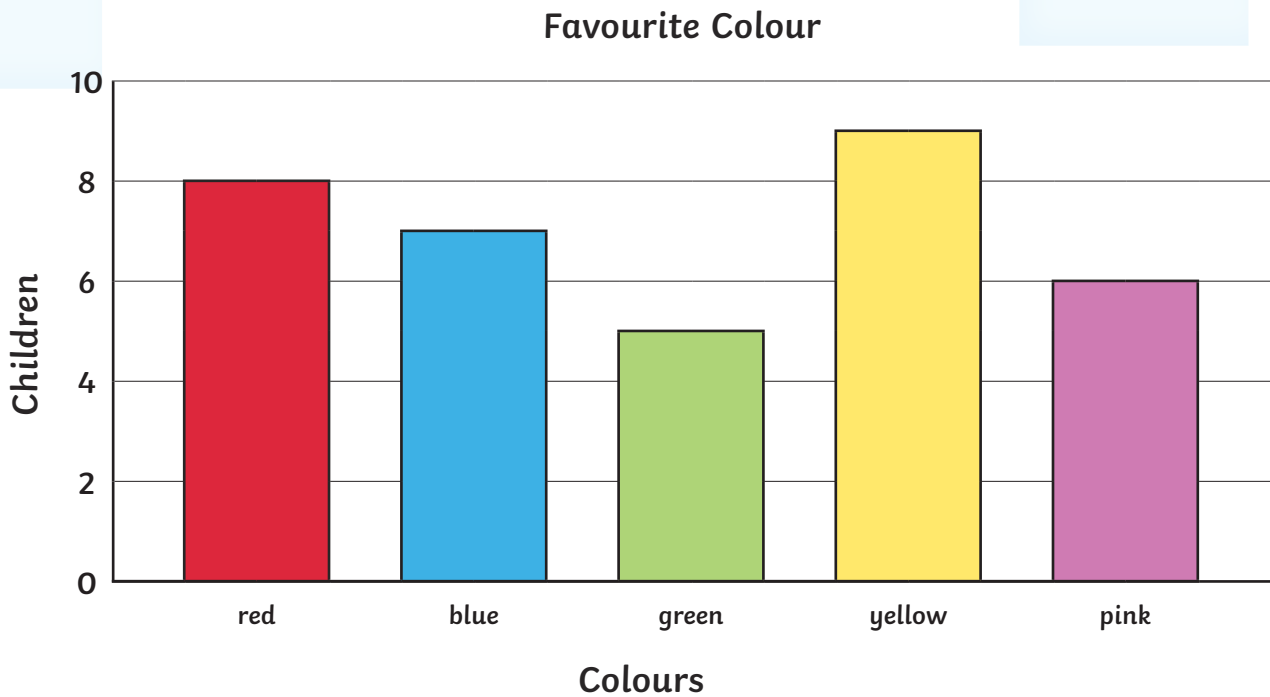


- 1) What is the favourite fruit? _____
- 2) How many children chose apples as their favourite fruit? _____
- 3) How many more children chose bananas than grapes as their favourite fruit? _____
- 4) How many children in total chose apples or pears as their favourite fruit? _____

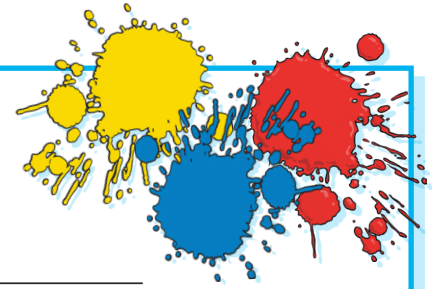
Write your own questions for a friend.



Interpreting Scaled Bar Charts



Answer the following questions.

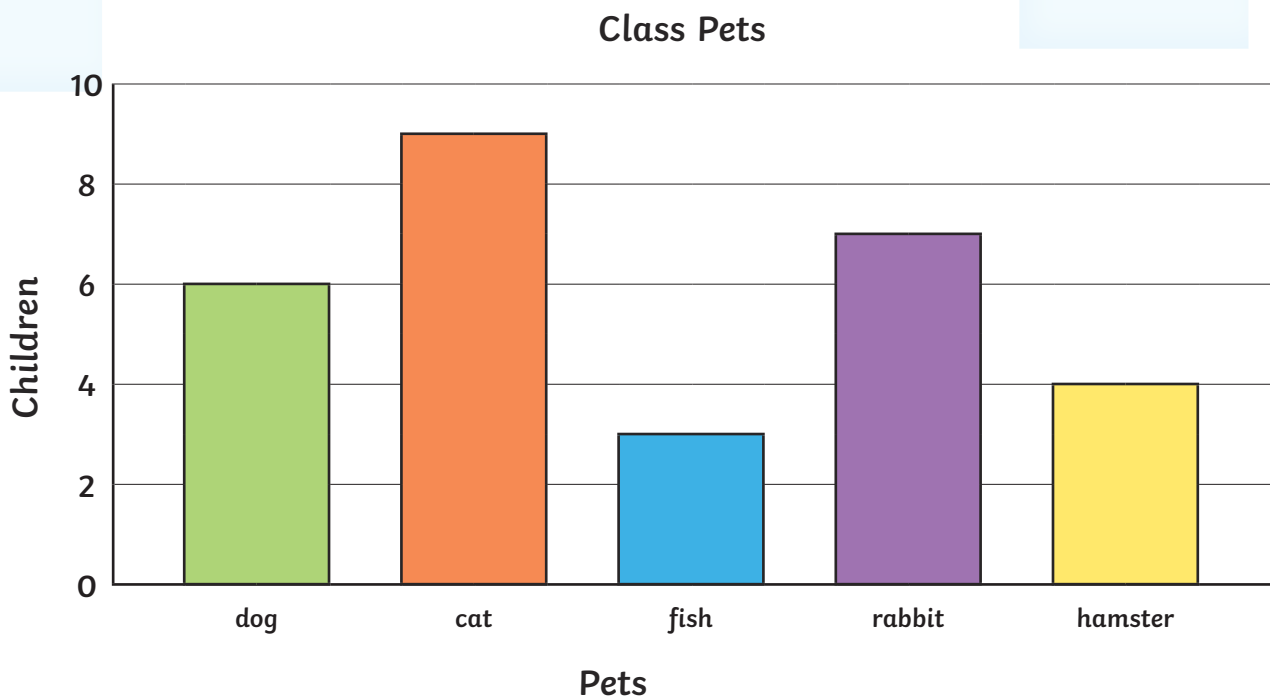


- 1) What is the least favourite colour? _____
- 2) How many children chose yellow as their favourite colour? _____
- 3) How many fewer children chose green than blue as their favourite colour? _____
- 4) How many children in total chose pink or red as their favourite colour? _____

Write your own questions for a friend.

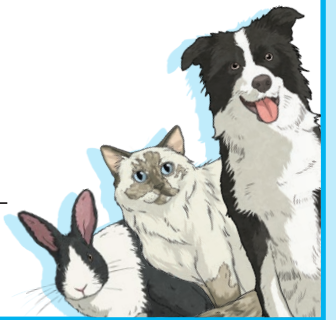


Interpreting Scaled Bar Charts



Answer the following questions.

- 1) What is the most common pet? _____
- 2) How many pets are there in the class? _____
- 3) How many more rabbits than hamsters are there? _____
- 4) How many fewer dogs than cats are there? _____



Write your own questions for a friend.



Interpreting Scaled Bar Charts **Answers**

Favourite Fruit

- 1) What is the favourite fruit? **banana**
- 2) How many children chose apples as their favourite fruit? **8**
- 3) How many more children chose bananas than grapes as their favourite fruit? **8**
- 4) How many children in total chose apples or pears as their favourite fruit? **14**

Favourite Colour

- 1) What is the least favourite colour? **green**
- 2) How many children chose yellow as their favourite colour? **9**
- 3) How many fewer children chose green than blue as their favourite colour? **2**
- 4) How many children in total chose pink or red as their favourite colour? **14**

Class Pets

- 1) What is the most common pet? **cat**
- 2) How many pets are there in the class? **29**
- 3) How many more rabbits than hamsters are there? **3**
- 4) How many fewer dogs than cats are there? **3**

