

# For each character:

- *Their name and image from the film*
- *Relationship with other characters*
- *Themes displayed by the character*
- *Quotes from the character*
- *Technique - Visual AND Verbal*
- *Relevance to real life*

## List of Characters

---

- Ricky Baker
- Hec Faulkner
- Bella Faulkner
- Officer Andy
- Paula Hall
- The Hunters
- Psycho Sam
- Kahu



## *Character name and image from the film*

Officer Andy is the lead police officer for the hunt on Ricky and Hector. Paula Hall is the antagonist of the film, and usually rivals to Ricky. She wants to get Ricky so he could get him to another foster family out of his free will.



## *Relationship with other characters*

The relationship between Paula Hall and Officer Andy is that they are basically inseparable, meaning the two are always close by when they are present in the shot. Paula and Andy are colleagues and work together. Both of them are also the main antagonist of the movie and they hunt Ricky down so he can go to another foster home against his own will.



## *Themes displayed by the character - Explain how*

Themes that display Paula Hall is that she is resilient, meaning that she won't stop until she would succeed capturing Ricky Baker as seen in the movie. Another theme that Paula Hall is shown is that she can have suspense, meaning that at times she has the chance to capture Ricky, but usually not succeeding.

Themes that displayed Officer Andy is that he assists Paula Hall, meaning that he would help Paula Hall in any way. Another theme is that he adds comedy to the film. For example, at the last scene, Paula Hall thought that Officer Andy was still on the armored vehicle, but he had left before Paula Hall noticing.



## *Quotes from the character*

“No child left behind.” - Paula Hall

Officer Andy: We're offering ten thousand dollars to anyone who can capture them, dead or alive.

Paula haul - “well i see he has a rifle, just keep him away from this little guy, god know what he is capable of”.

---

## Technique - Visual

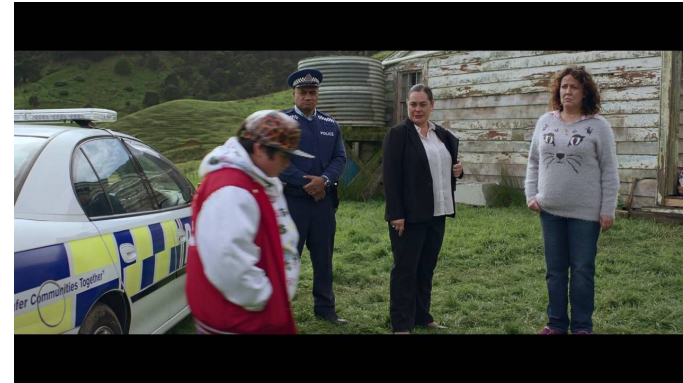
The technique used in this shot is long shot with natural lighting. This visual technique shows the characters, props and the setting they are in. It gives us the impression that the Officer Andy and Paula are outside the farmhouse. This is the scene when Ricky is getting adopted or leaving the police car.



---

## Technique - Verbal

The verbal techniques used in the shot is the use of dialogue. The use of dialogue emphasize the relationship between the people in the shot. For example, we can tell that Paula Hall is use to knowing Ricky because she can name all the crimes that Ricky has.







## *Relevance to real life*

There are many corrupt officers and people who will always be stubborn. Society isn't always perfect and Taika Waititi shows this very well throughout the movie.

Kids like Ricky often find it hard to live with strangers especially when they are hunters and use guns and Kids like Ricky are often discriminated because of their past or present behaviours and most strangers are stubborn enough to not think that he can change. also the environmental influence could possibly bring a change in behave.