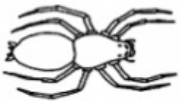
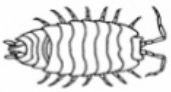


What is the animal?

This task is about matching and naming six animals with their descriptions.

Draw a line from the animal to its correct description. Also write in the name of the animal in the space. An example has been done for you. Two descriptions are not needed.



No legs, no tentacles, long ringed body. It is a _____ .
No legs, has tentacles, and a shell. It is a _____ .
No legs, has tentacles, but no shell. It is a _____ .
Six legs, three body parts, antennae. It is a _____ .
Six legs, has tentacles, two body parts. It is a _____ .
Eight legs, two body parts. It is a _____ .
Fourteen legs, flat, and can roll into a ball. It is a _____ .
Many legs, four per segment, round, long body, eats plants. It is a <u>millipede</u> .
Many legs, two per segment, flat long body, eats animals. It is a _____ .