

Draft of Natural disasters for Survivor - Year 8 - Term 2 2023:

Your group (This will be given to you in has been given one disaster scenario (Cyclone, Heatwave, Drought, Flood, Cold snaps/Cold winter snow storms, Tornado). Using your learning from all subjects this term, and your own personal knowledge, construct a complete Mitigation and Survival Plan.

Each disaster has two major events that occurred in NZ....one recent and one historical.

- Your group (3-4 students) will present this plan to your teachers
- - include slides with no more than 8 words on each slide (we're not reading, we're listening! You can have separate speaker notes, if needed)
 - include appropriate models/ diagrams/ demonstrations /interviews /Acting / Video Clips / different locations with your voice over
 - allow for each person to speak for at least 2 mins each not (This can be broken down in different parts but the Total Time will be 2 mins)
 - Students will use their phone to record and edit footage - Recommended the Villo App works on both Android and Apple

List of Natural Weather disasters:

X2 per category and keeping them related to Aotearoa

Using Epic:

1 paragraph summary overview of event.....Who, What, where, why

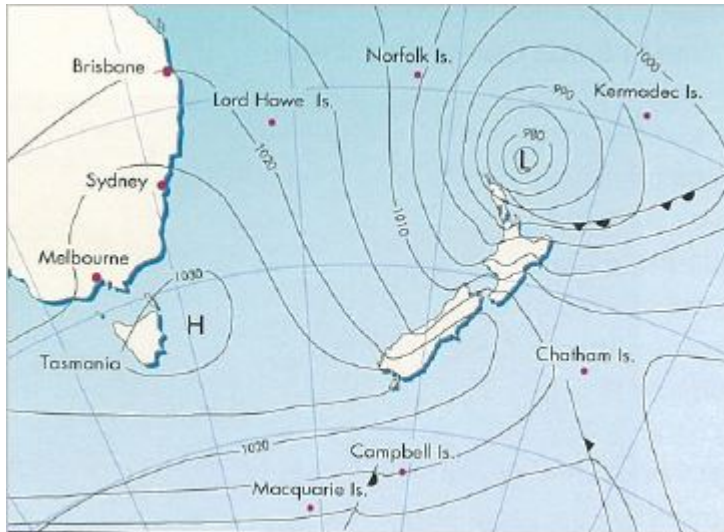
Need to upload a weather map

Short and long term consequences.....

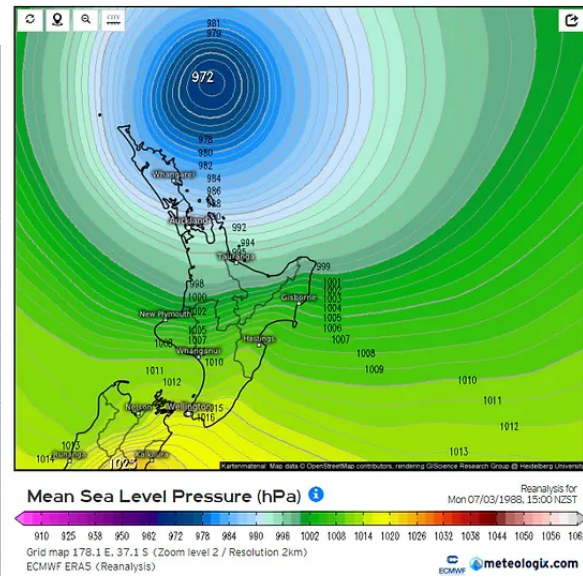
Weather maps to be added to each event (if available)

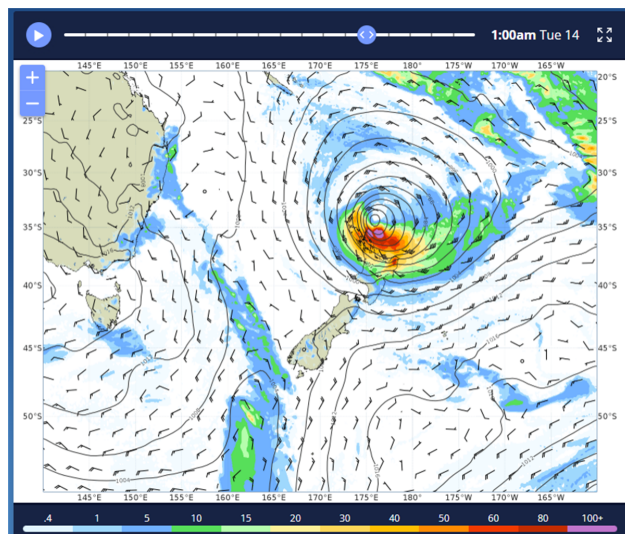
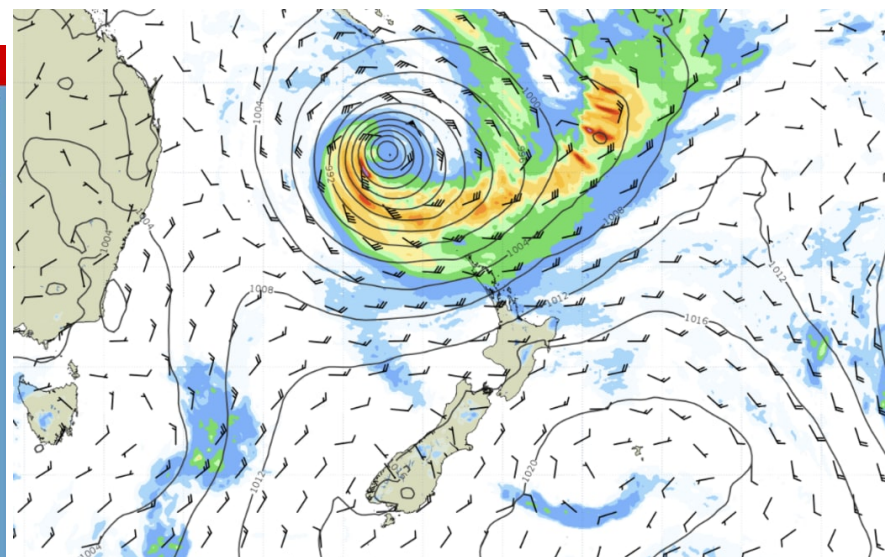
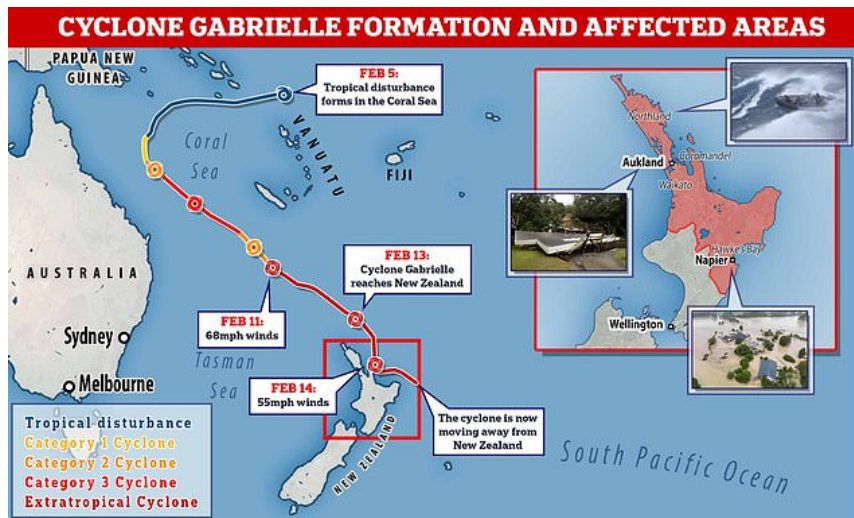
Cyclones:

- Cyclone Bola 1988



- Cyclone Gabrielle 2023

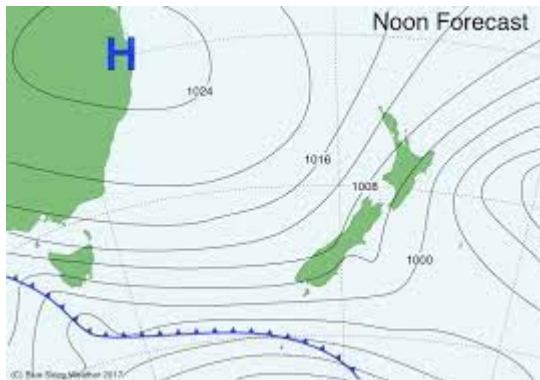




Droughts:

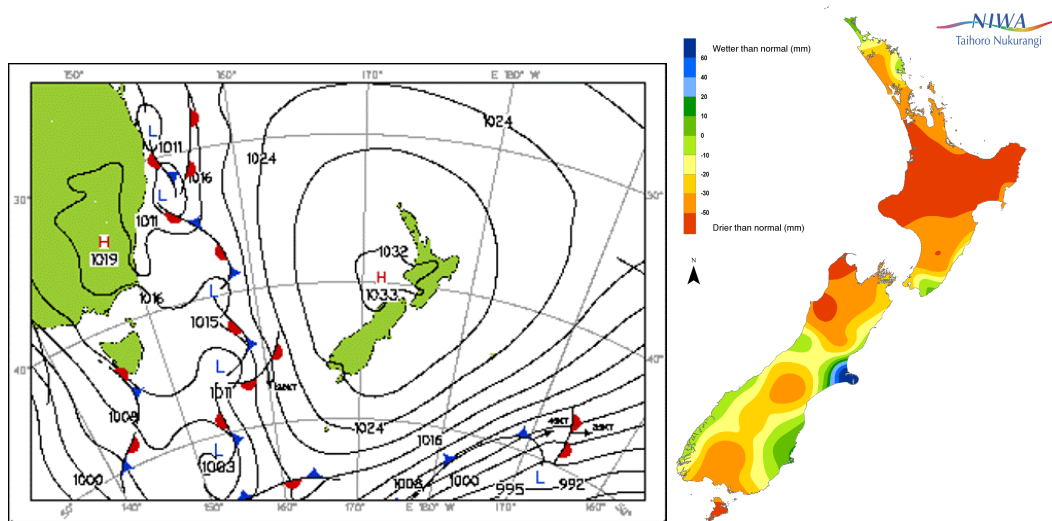
- Summer/Autumn 2020

<https://earthobservatory.nasa.gov/images/146674/new-zealand-browned-by-drought>



- 2013/2014 drought in all of NZ (note this period was neither a La Nina or EL Nino system)

<https://theconversation.com/new-zealand-is-drying-out-and-heres-why-32330>



Floods: (NZs No 1 Natural Disaster) <https://teara.govt.nz/en/floods/page-1>

- Auckland Anniversary Floods 2023

North Island Flood Headlines

Information as of 9 February, 2023



State of Emergency
Regions: [Auckland](#), [Waikato](#)



Rain Gauge: [Auckland Airport](#)
24-hour Precipitation: [245.0 mm](#)
Jan. 2023 Precipitation: [419.6 mm](#)



Houses Requiring Assessment: ~ [5,000](#)
Red-stickered houses: [>270](#)
Yellow-stickered houses: [>1,600](#)



Fatalities: [4](#)

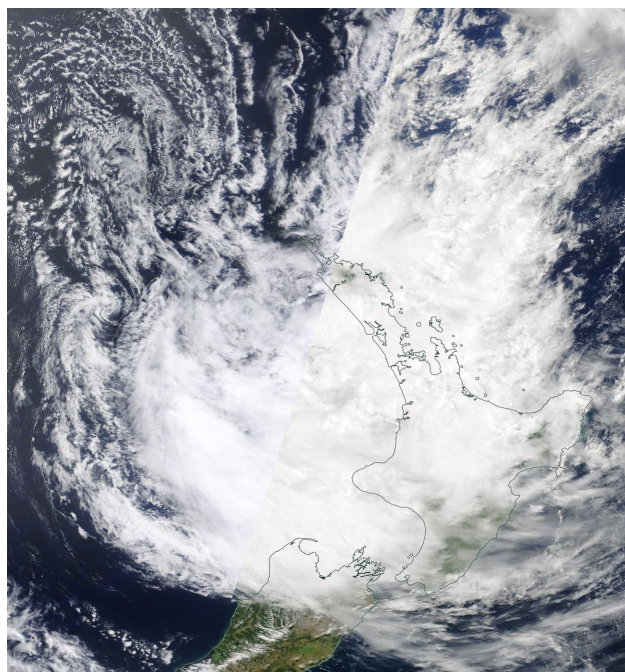
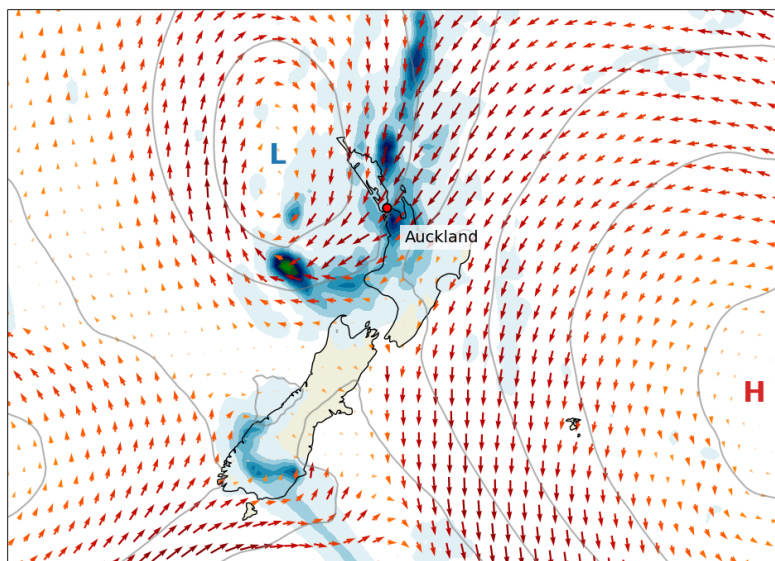
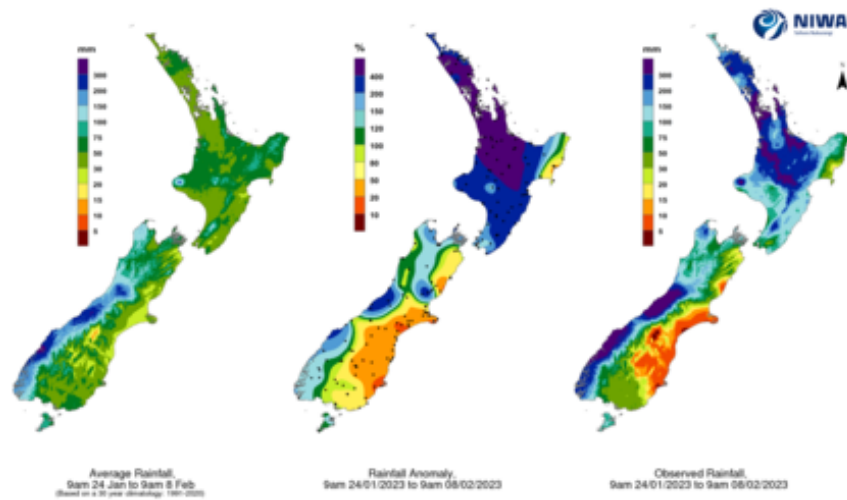
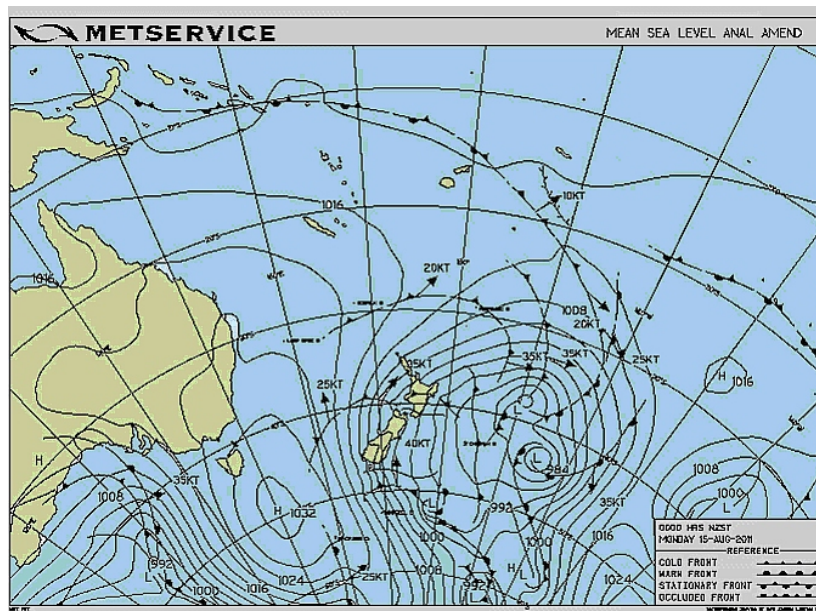


Figure 1: Surface winds (arrows), precipitation (shadings), and mean sea-level pressure (contours) 12:00 NZT, 27 January 2023.



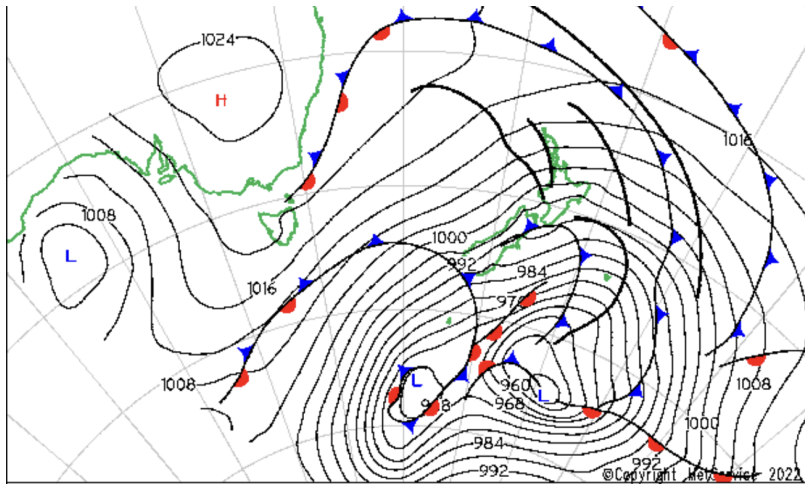
- The Kopuawhara Flash Flood, 1938

https://hwe.niwa.co.nz/event/February_1938_Eastern_North_Island_Flooding



- All of NZ July 1939:

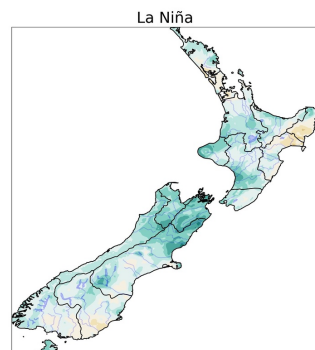
https://hwe.niwa.co.nz/event/July_1939_New_Zealand_Snow



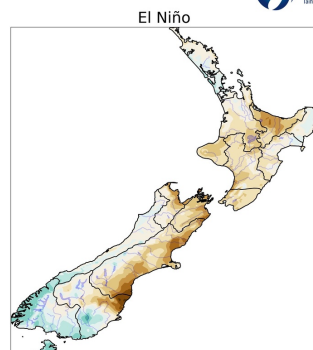
Tornado:

La Nina/El Nino events:

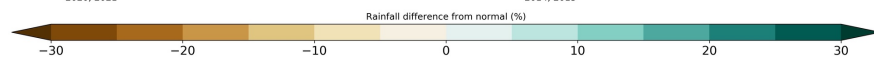
Spring rainfall during La Niña & El Niño



Spring La Niña years:
1973, 1974, 1975, 1988, 1998, 2000, 2008, 2010, 2011, 2017,
2020, 2021



Spring El Niño years:
1972, 1977, 1982, 1987, 1991, 1993, 1994, 1997, 2002, 2006,
2014, 2015

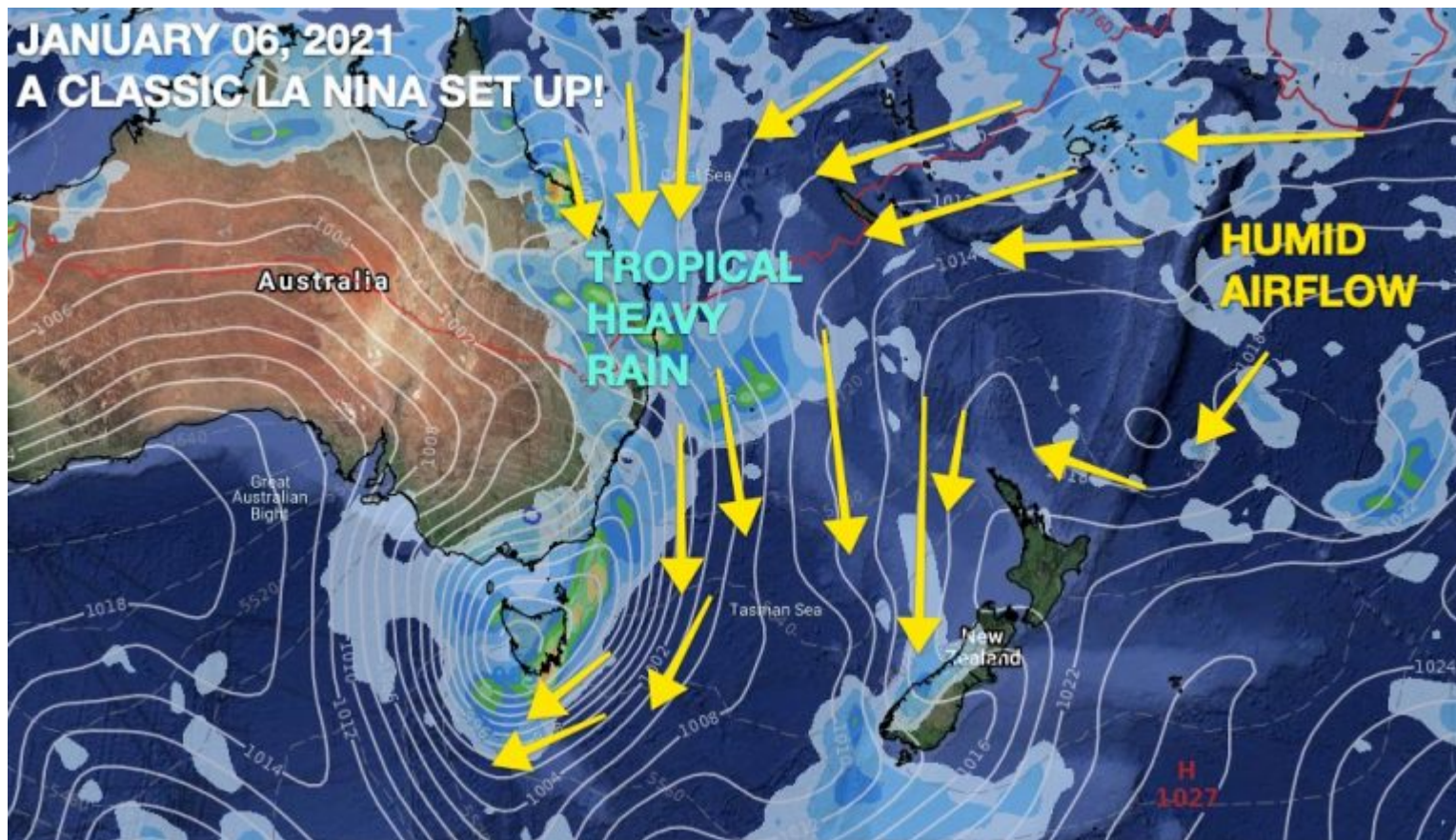


Data: NIWA Virtual Climate Station Network (VCSN). Anomalies are calculated with reference to a 1991-2020 climatology. Spring refers to the meteorological season which runs from September-November.

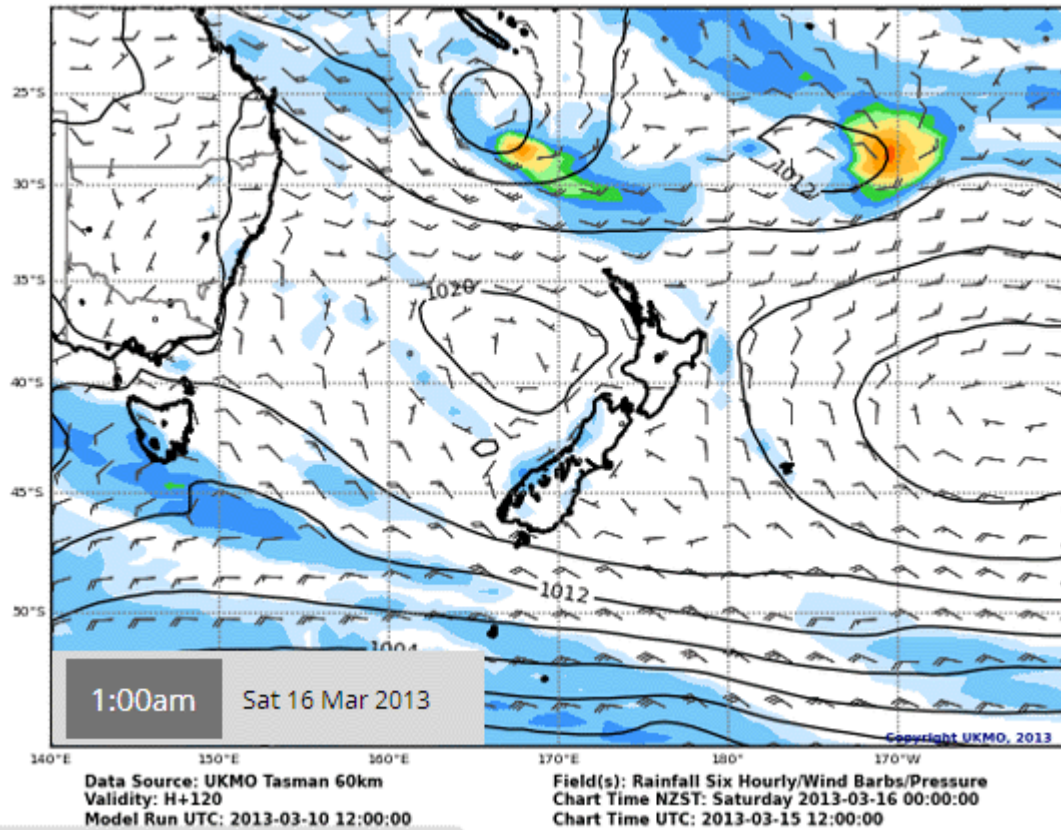
3 year weather pattern La Nina of 2021 to 2023

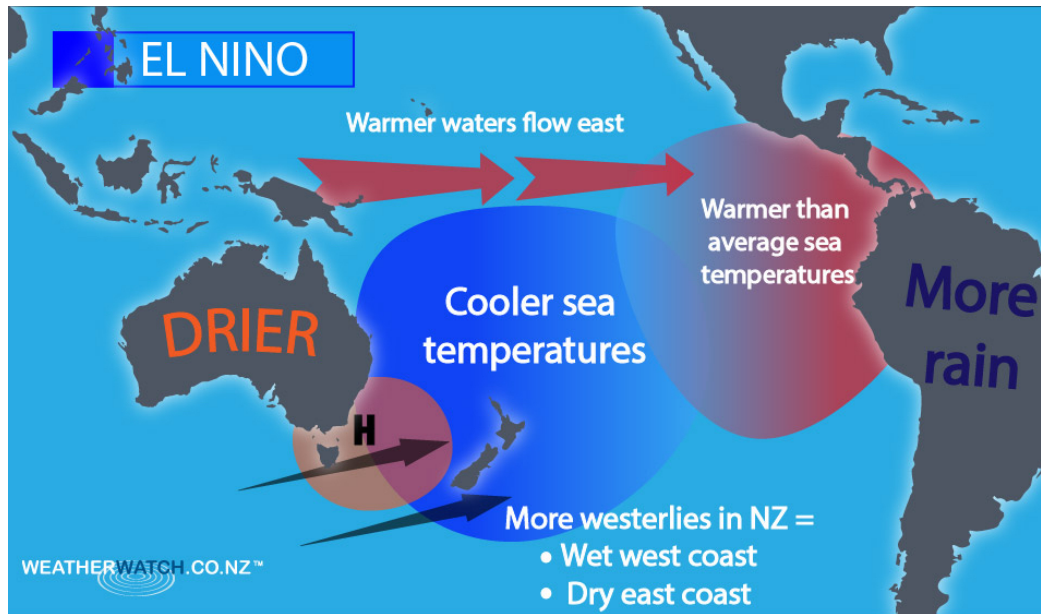
JANUARY 06, 2021

A CLASSIC LA NINA SET UP!



Latest rain forecast





Heatwave:

- Marine Heatwave of 2022/2023

<https://www.theguardian.com/environment/ng-interactive/2023/may/13/are-new-zealands-marine-heatwaves-a-warning-to-the-world>

- Land heatwave of February 1973

Highest air temperature:

North Island	39.2	7 February 1973
South Island	42.4	7 February 1973

Your group has been given a disaster scenario. Using your learning from all subjects this term, and your own personal knowledge, construct a complete Survival Plan.

- Your group will present this plan to your teachers
- You must include the following:
- Your presentation must:
 - include slides with no more than 8 words on each slide (we're not reading, we're listening! You can have separate speaker notes, if needed)
 - include appropriate models/ diagrams/ demonstrations
 - meet each learning area's criteria (see table below)

Deliver a clear and detailed verbal presentation of your Survival Plan, which				
1. provides opportunities for each team				

<p>member to speak for approx 2 minutes in total</p> <p>2. includes suitable use of any slides, props or demonstrations</p>				
English	Math	Science	Health/PE	Global Studies