

Cells 7A

Year 7

All : Name features of plant and animal cells (4)

Most: Describe → differences between plant and animal cells
→ functions of cell parts (5)

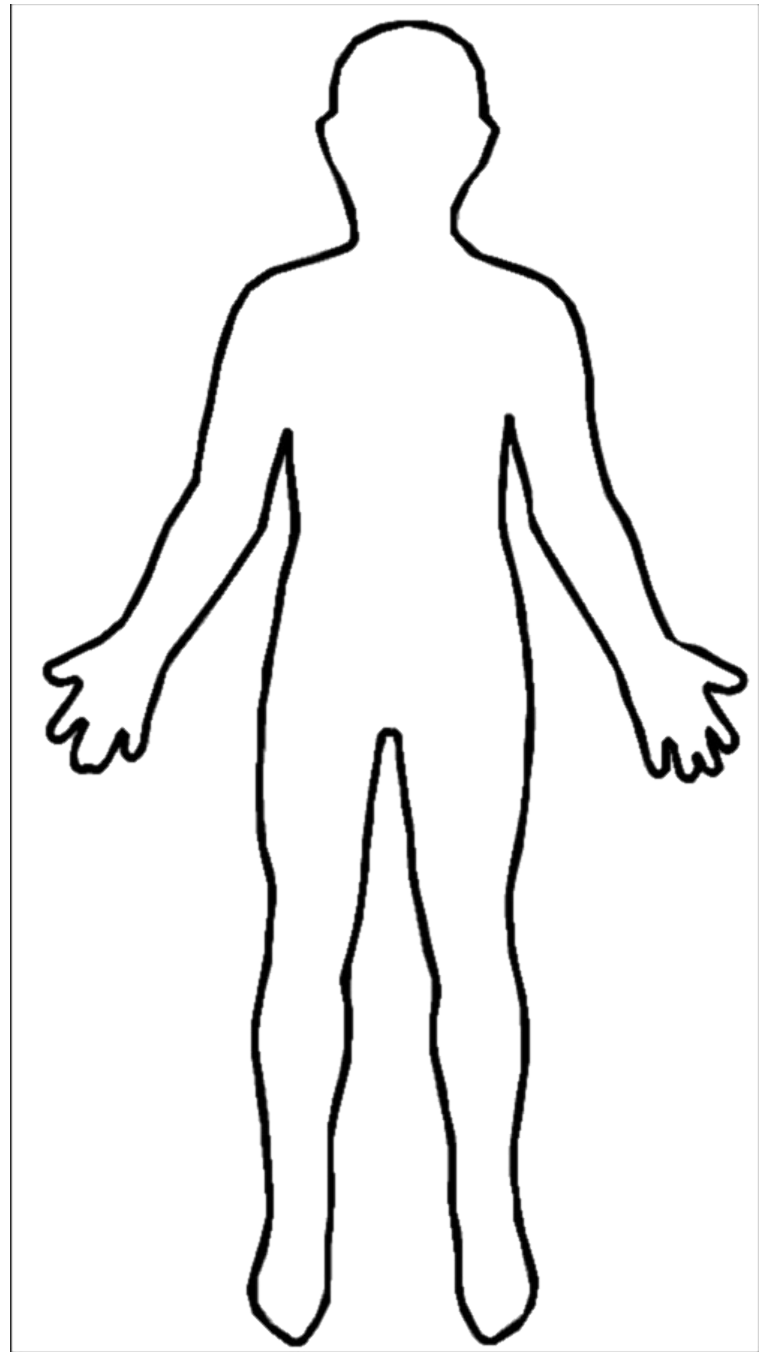
Some: Explain why there are differences between plant and animal cells (6)

STARTER



10 minutes

- Draw around a friend!
- Label and draw on the locations of as many organs as you can think of
- Ext. Write down what you think the function of each organ is



What is a cell?

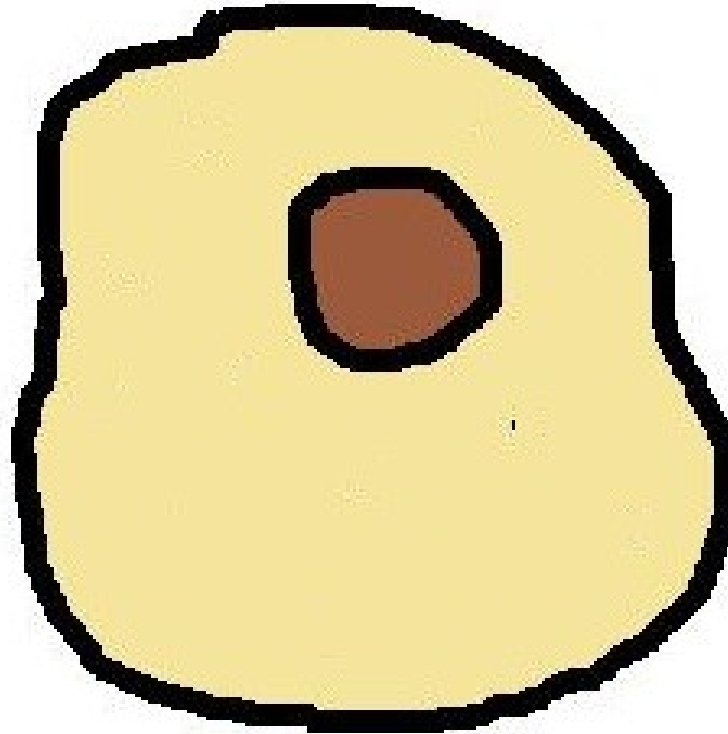
Animal cell

Nucleus

Stores the
DNA

Cytoplasm

Jelly like substance
Most of the cells
activities happen here



Cell membrane

Controls what
goes in and out
of the cell

Plant cell

Cell membrane

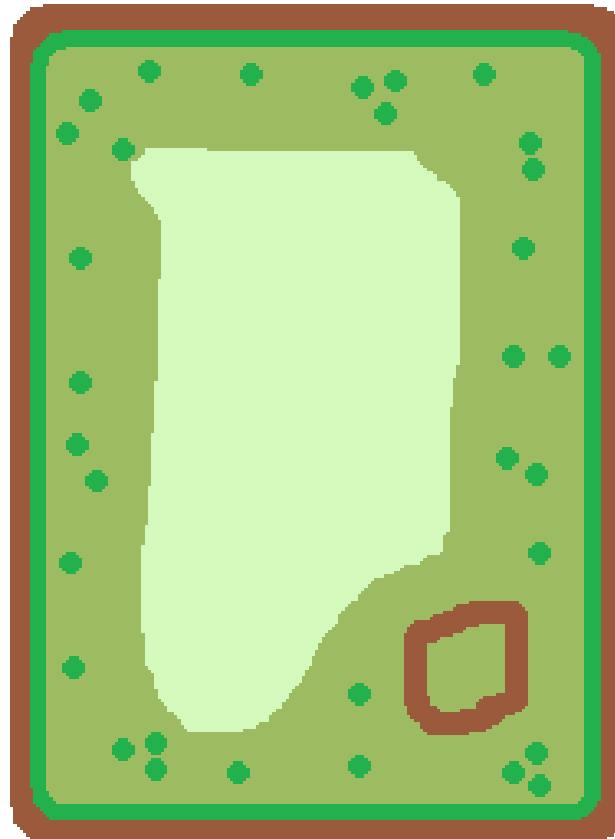
Controls what goes in and out of the cell

Cytoplasm

Jelly like substance
Most of the cells activities happen here

Cell wall

Supports the cell made out of cellulose



Chloroplast

Contain **chlorophyll** and photosynthesis happens here
(process for making food in plants)

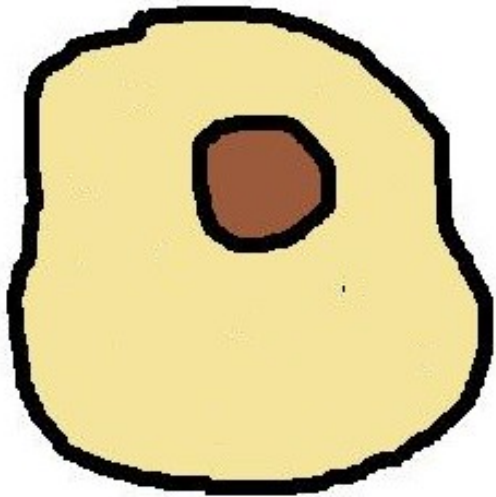
Vacuole

Storage space in a cell, filled with cell sap

Nucleus

Stores the DNA

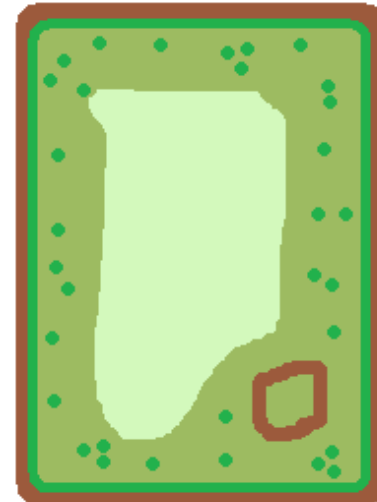
Comparing animal and plant cells



Cytoplasm

Cell
membrane

Nucleus



Chloroplast

Vacuole

Cell wall

Match the cell part to its function

Nucleus

Controls what goes in and out of the cell

Cell membrane

Jelly like substance Most of the cells activities happen here

Cell wall

Supports the cell made out of cellulose

Vacuole

Contain **chlorophyll** and photosynthesis happens here (process for making food in plants)

Chloroplast

Storage space in a cell, filled with cell sap

Cytoplasm

Contains DNA

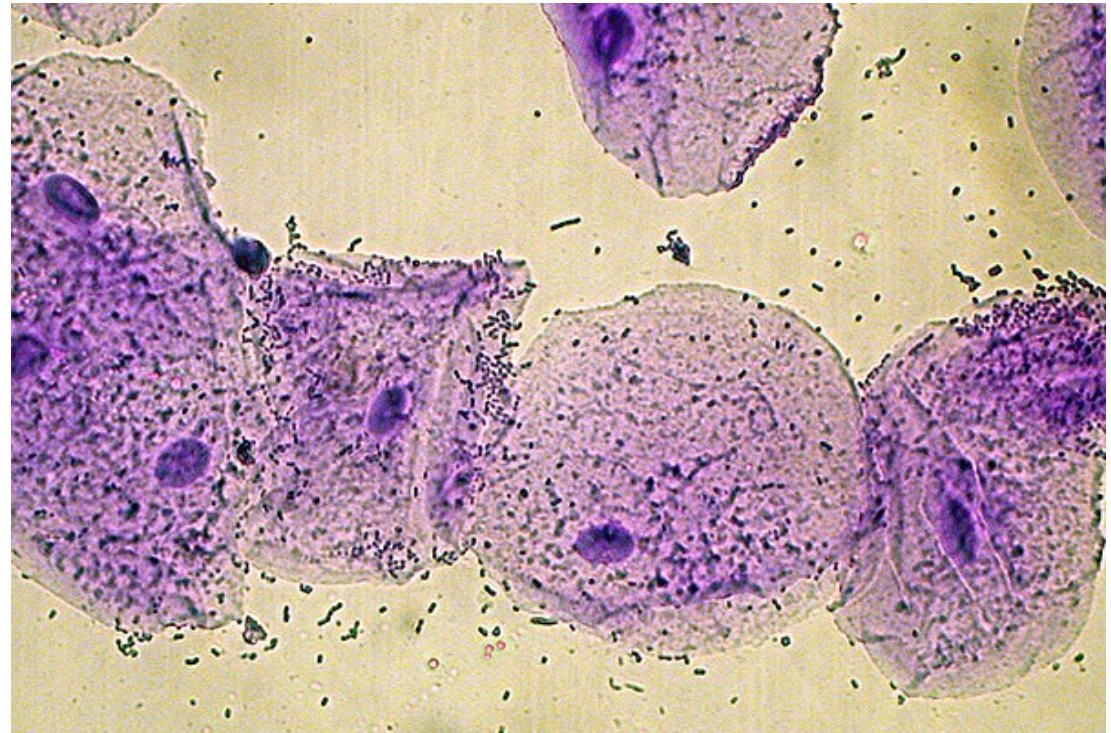
Practical – Looking at cheek cells



20 minutes

SAFETY.

Draw 1 or 2 cells
at least $\frac{1}{4}$ of a
page in size



Plenary

Write down a question about the topic so far and hand it in.

This will be a short test at the beginning of next lesson where you have a chance to show off your knowledge!

Fill out an exit ticket and stick into your book

