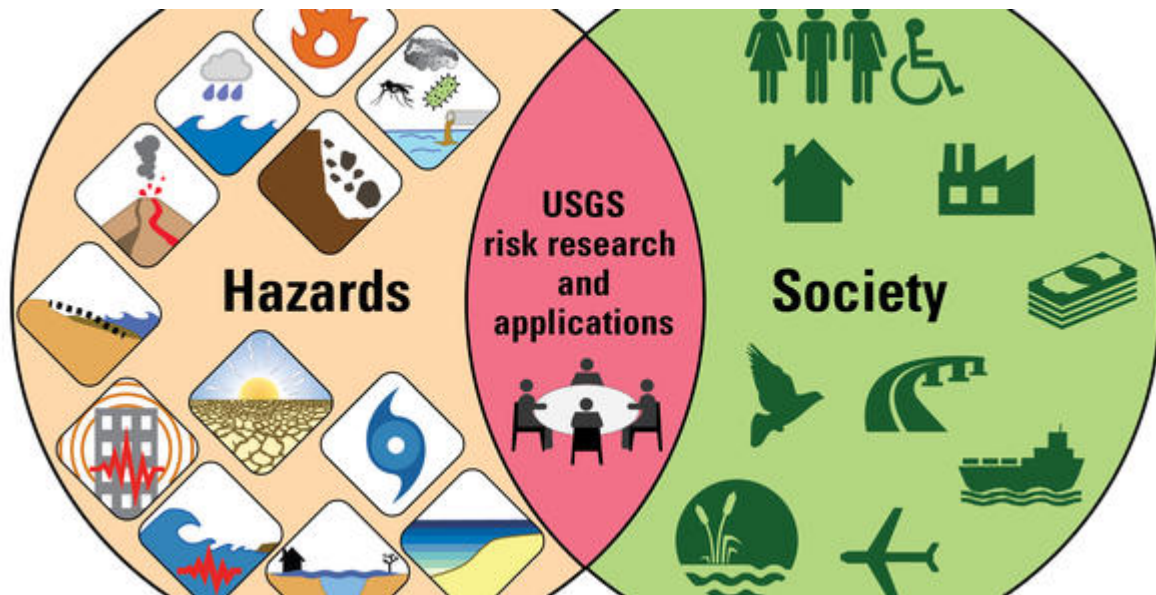




Mission Heights

GROWING GREATNESS
KIA MANA AKE



Due date: 12pm 28th March, 2022

Task:

Science and Global Studies will be collaborating for this assessment.

In this assessment, you will investigate the nature of hazards, risks and disasters. You will focus on the internal processes of volcanoes and how these shape and change Aotearoa's surface features. You will learn the importance of planning how to deal with situations that threaten the safety of individuals and communities.

Pretend that a major volcano eruption has occurred in New Zealand and that you have to spend at least two nights at school because roads and houses have been severely damaged. All communication systems are down. You will draw conclusions about the readiness of our school to deal with an emergency situation by reviewing our current Emergency Plan and if you consider that any changes should be made and how much the students know about it.

You will inform people why this type of event has a risk for the safety of all people and the importance of being ready for emergencies.

Choose 1 way in which to present your work from the options below:

- Pamphlet (double sided max)
- Canva (2 pages max)
- A2 poster
- Video (3 minutes)

Science:

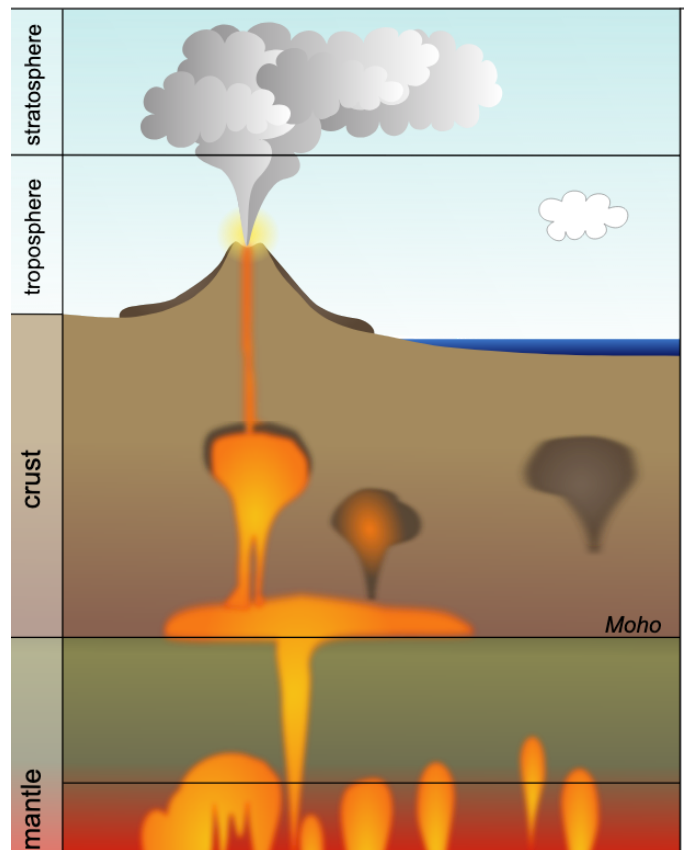
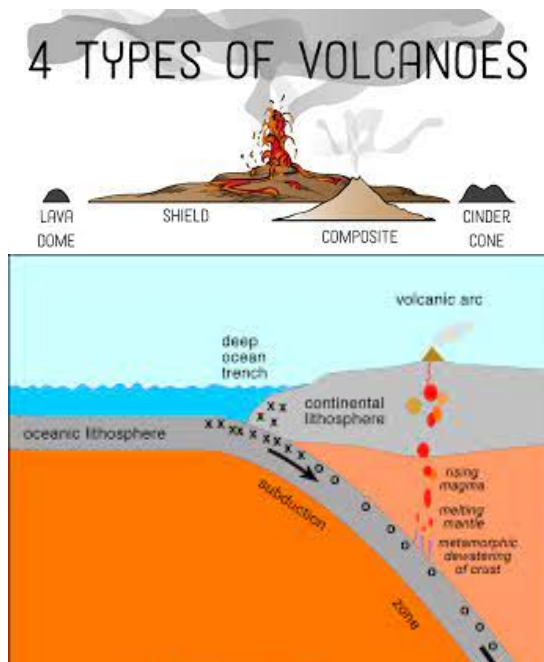
You need to demonstrate your understanding of the formation of surface features in Aotearoa. This involves explaining the internal processes, and the formation of surface features in Aotearoa , using information which could include visual representations.

Your work must include the following information:

- An annotated diagram explaining:
 - Process of how volcanoes erupt
 - Why different volcanoes are different shapes
 - Compare and contrast 2 different types of volcanoes in Aotearoa

Use the images and word bank below to guide you:

Subduction, trench, magma, viscosity, fissures, eruption, crust, mantle, basalt, andesite, rhyolite, chamber



Global Studies:

- The difference between a hazard, risk and disaster.
- Brief how this could have an impact in our social and natural environment
- A list of hazards in NZ and consequent risks at MHJC.

Being prepared - family, MHJC and the Flat Bush community

- Why is it important to be prepared for a disaster?
- How prepared is your family, and what might you do in the event of a natural disaster?
- What uncontrollable events might MHJC need to plan for? How might they affect us? (no electricity, unavailability of food and supplies in stores, etc.)
- In what ways might your family, MHJC and the Flat Bush community prepare for a disaster?
- What might the consequences be for the Flat Bush area?

MHJC's Emergency Plan

- What improvements might be needed to the current MHJC emergency plan?
- Survey: What do students know about current emergency plans at home and at MHJC?
- Should an emergency plan be put in place for students to know?

L5/Y9	TOWARDS	AT	ABOVE	BEYOND
<i>Internal processes</i>	You have yet to investigate and describe the internal processes that shape and change the surface features of New Zealand	You have investigated and described the internal processes that shape and change the surface features of New Zealand	You have investigated and described the internal processes that shape and change the surface features of New Zealand using various examples	You have investigated and explained in some detail , the internal processes that shape and change the surface features of New Zealand using various examples
Communicating Science	You have used several scientific symbols, conventions, and/or vocabulary	You have used at least two of: relevant scientific terms, symbols, simple representations, or simple models to communicate effectively	You have used a range of relevant scientific terms, symbols, simple representations, and simple models to communicate effectively	You have used a range of relevant scientific terms, symbols, representations, and models to communicate effectively

Outline of a community challenge	You have shown some understanding of a community challenge	You have shown an understanding of a community challenge	You have shown a full understanding of a community challenge	You have shown a sound understanding of a community challenge
Individual/Group Response	You have described how Flat Bush/MHJC could respond to a community challenge	You have described in detail how Flat Bush/MHJC could respond to a community challenge	You have explained how Flat Bush/MHJC could respond to a community challenge	You have explained in detail how Flat Bush/MHJC could respond to a community challenge
Time management	You have yet to complete and submit your assessment	You have submitted your assessment late	You have submitted your assessment by the date 28th March	You have submitted your assessment by the date 28th March
Overall grade	Working TOWARDS the Expected Curriculum Level	Working AT the Expected Curriculum Level	Working ABOVE the Expected Curriculum Level	Working BEYOND the Expected Curriculum Level