

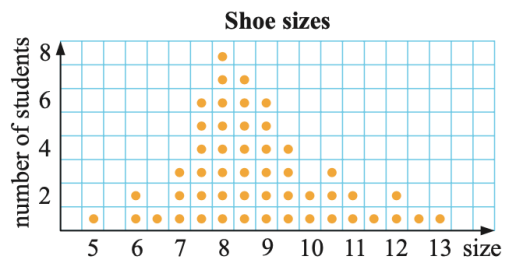
Walt draw and read dot plots

Success Criteria I know each dot represent a data point.

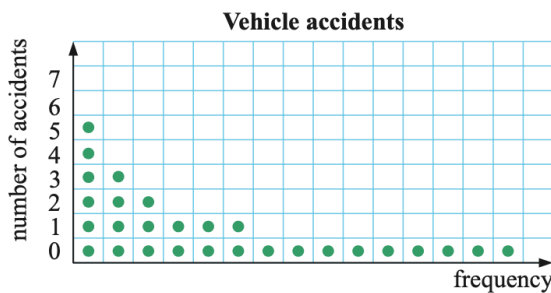
- 1** Use a vertical dot plot to display the data on the ages of children at a party:
12, 11, 17, 12, 14, 13, 11, 12, 15, 13, 12, 14, 11, 14, 12, 10, 12, 11, 13, 14
- a** How many attended the party? **b** How many were aged 12 or 13?
c What percentage were 13 or more years old?

- 2** Draw a horizontal dot plot of the number of goals thrown by a netballer during the 23 match season. The number of goals scored per match were:
17 22 18 23 20 20 19 20 21 26 23 22 20 24 20 19 19 23 22 17 19 21 21
- a** How many times did she score 20 or more goals?
b In what percentage of games did she score 22 or more goals?

- 3** The given vertical dot plot shows shoe sizes for students in year 8.
- a** How many students are in year 8 at the school?
b How many have shoe sizes 9 or more?
c What percentage have shoe sizes of 8 or more?



- 4** Below is a horizontal dot plot of the number of vehicle accidents each day in the city square over a one month period.



- a** What was the month?
b What is the most frequent score?
c On how many occasions were there at least two accidents?
d On what percentage of days were there no accidents?

- 5** Two year 8 mathematics classes sat for the same mathematics test out of 20 marks. Their results were:

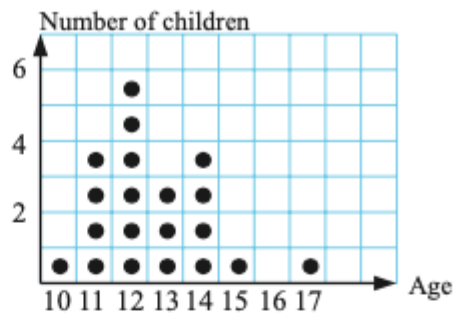
Class 8P: 19 20 11 15 16 17 17 14 16 17 20 18 17 16 15 15 16 16 17 16

Class 8Q: 14 13 16 17 20 13 16 15 18 12 13 14 17 14 12 13 13 14 10

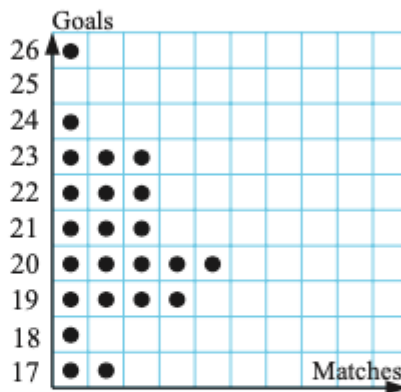
- a** Draw separate dot plots for each class.
b State the highest and lowest marks for each class.
c Which class performed better at the test?

Answers

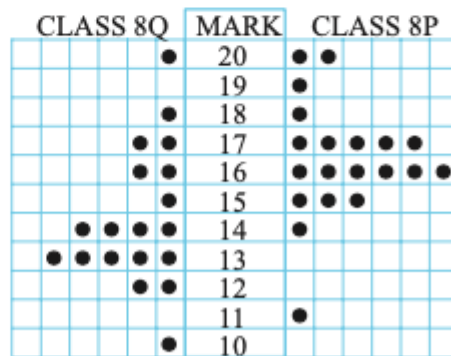
- 1 a 20
 b 9
 c 45%



- 2 a 16
 b $\div 35\%$
 3 a 50
 b 22 c 74%
 4 a February
 b 0 c 7 days
 d $\div 54\%$



- 5 a



- b 8P, 20 and 11; 8Q, 20 and 10 c 8P