

Q1 Which digit is in the **hundreds place** in the number **23 190**?

Q2 Complete:

 19th 22nd

Q3 Continue the pattern.

Rule: **subtract 6**

Q4 601 845 722 812 534

If these numbers were arranged in **descending** order, what would be the 2nd number?

Q5 Write the first six **square** numbers.

Q6 $5491 + 7831 =$

Q7 $5614 - 4521 =$

Q8 $4000 - 3281 =$

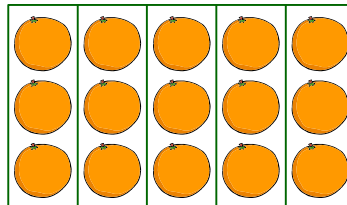
Q9 $7 \times 50 =$

Q10 $63 \div 9 =$

Q11 $\frac{5}{8}$ is $\frac{3}{4}$

less than more than equal to

Q12



$\frac{4}{5}$ of 15 =

Q13 Which digit is in the **tenths** place in **63.27**?

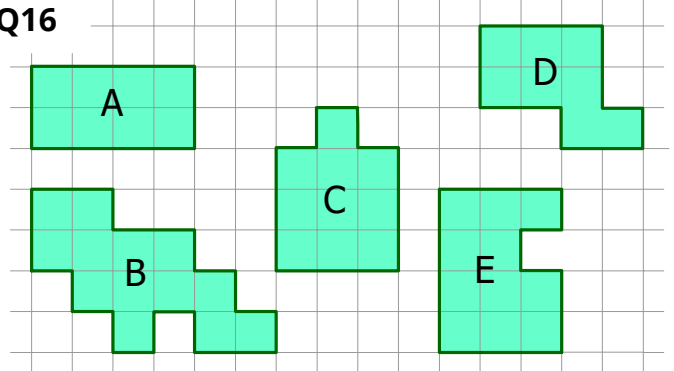
Q14 Arrange the decimals in **descending** order.

0.84 1.54 1.6 0.9

Q15 Choose coins to make up **\$4.30**.



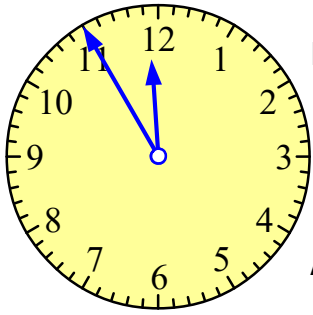
Q16



Which shape has the **greatest** area?

Which shape has the **same** area as A?

Q17 What's the time?



Digital time

Analog time

Q18 Complete: 29km = m

Q19 Complete the conversion.

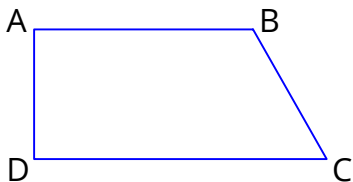
3.7kg = grams

Q20



The baby bottle holds than 1 litre.
more or less

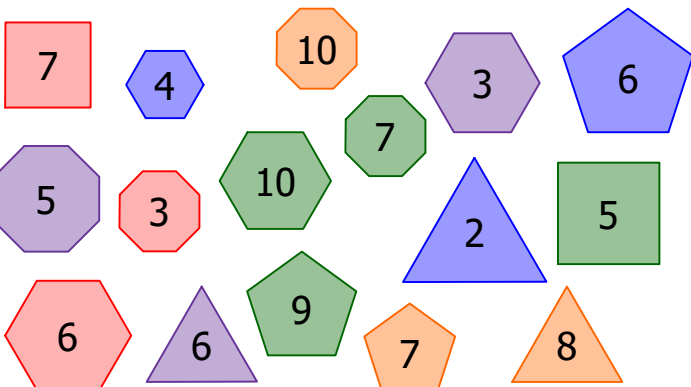
Q21 Select **true** or **false** for the trapezium ABCD.



AB is **parallel** to DC.

AB is **perpendicular** to BC.

Q22 Add all the numbers on the **octagons**.



Total sum (on octagons) =

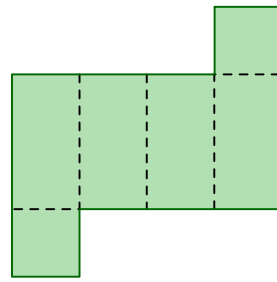
Q23 This is the net of which 3D shape?

Circle your answer.

octagonal prism

triangular prism

hexagonal prism

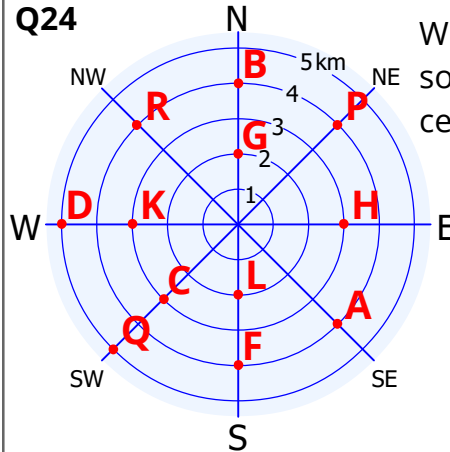


cube

rectangular prism

pentagonal prism

Q24



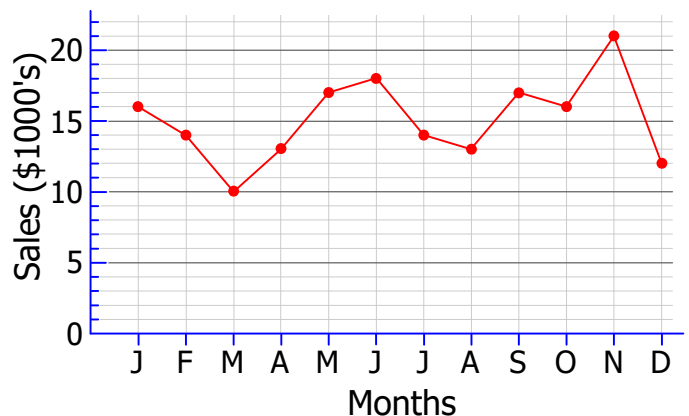
Which point is 4 km south of the radar's centre?

Q25 Complete the table.

Sport	Tally	Total
soccer		
rugby		
AFL		
cricket		

Q26

2015 Sales



What were the sales for August?

How many months had sales over \$15 000?