

**Q1** Write the numeral for:

$$200\,000 + 50\,000 + 7\,000 + 200 + 10 + 9$$

**Q2** Which digit is in the **thousands place** in the number **189510**?

**Q3** Round off to the **nearest hundred**.

$$367 \rightarrow \text{ } \boxed{\phantom{00}}$$

**Q4** Arrange the numbers in **ascending** order.

23    89    18    45    80

**Q5** Write the **factors** of 8.

**Q6**  $597 + 143 =$

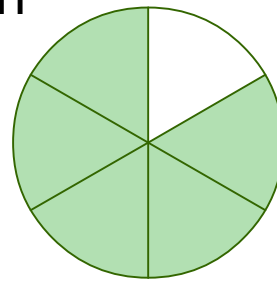
**Q7**  $843 - 289 =$

**Q8**  $800 - 541 =$

**Q9**  $8 \times 3 =$

**Q10**  $42 \div 7 =$

**Q11**



What fraction is shown?

**Q12** Complete:

$$\frac{1}{2} \text{ is } \boxed{\phantom{000}} \frac{1}{3}$$

○ less than    ○ more than    ○ equal to

**Q13** Rewrite 0.91 using tenths and hundredths.

$$0.91 = \boxed{\phantom{00}} \text{ tenths} + \boxed{\phantom{00}} \text{ hundredths}$$

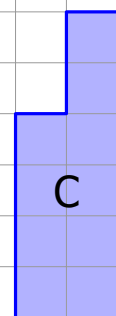
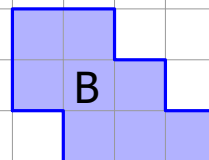
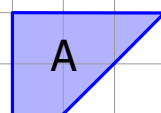
**Q14** Arrange the decimals in **ascending** order.

0.29    0.18    0.54

**Q15** Find the total value of the coins.




**Q16** Find the area of each.

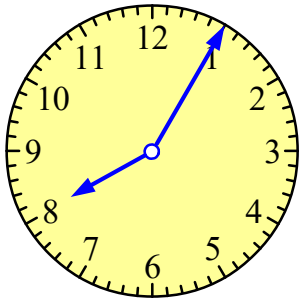


Shape A =

Shape B =

Shape C =

**Q17** What's the time?



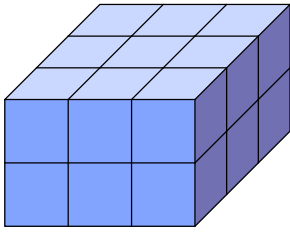
- 5 to 8
- 5 past 8
- 20 to 1
- 8 minutes to 1

**Q18** Which unit would you use to measure the **length** of a tennis court?

- centimetres
- metres
- kilometres

**Q19** 23 000 mL =  L

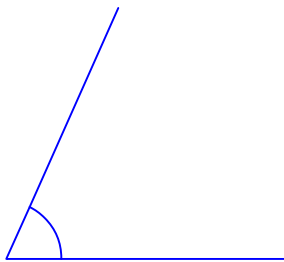
**Q20**



There are 2 layers of  cubes.

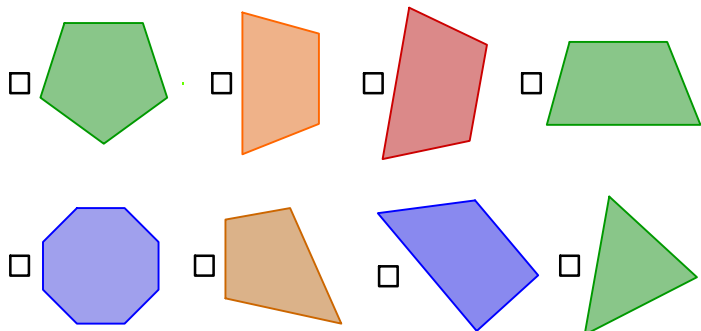
Volume =  cubes

**Q21** Complete: **more** or **less**?

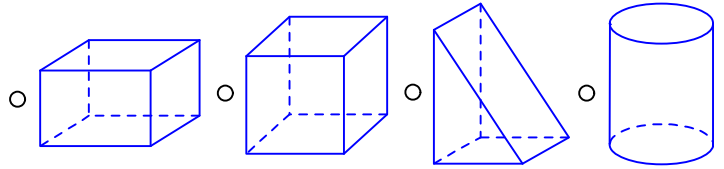


The angle is  than a right angle.

**Q22** Choose ALL of the **trapeziums**.



**Q23** Which solid is the cylinder?

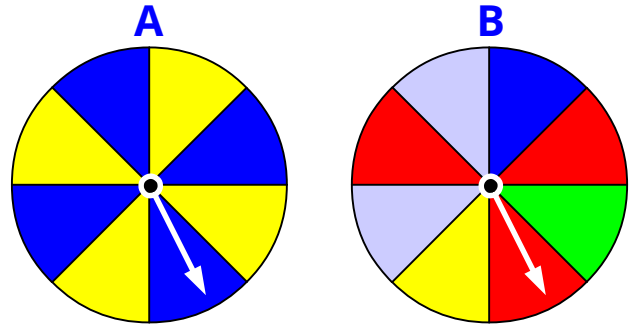


**Q24** Which TWO are correct?

- E is in the bottom row
- H is in the top row
- G is below D
- F is to the left of E
- G is in the bottom left-hand corner

A	B	C
D	E	F
G	H	I

**Q25** What chance do the spinners have of landing on **green**?



Chance of **A** landing on **green**?

- impossible
- unlikely
- even
- likely
- certain

Chance of **B** landing on **green**?

- impossible
- unlikely
- even
- likely
- certain

**Q26**

*Apples Sold 2015*

Jan/Feb	
Mar/Apr	
May/Jun	
Jul/Aug	
Sep/Oct	
Nov/Dec	

= 10 boxes

How many boxes were sold in May/Jun?

How many boxes were sold in the second half of the year?