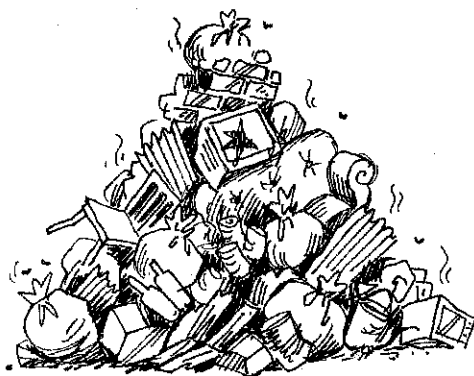


Living rock – True or False?

- | | |
|---|--------------|
| 1. The mantle is between the core and the magma. | True / False |
| 2. The Earth's crust is made of solid rock that doesn't move. | True / False |
| 3. There is a thick layer of hot rock beneath the crust. | True / False |
| 4. A volcano is an opening in the crust. | True / False |
| 5. Mountains can be made from the rubbing together of the plates. | True / False |

Burning issues



The Earth is a **closed system** – everything on Earth stays here, including water and air. Nothing (except heat) is lost from the system. This means that humans' rubbish and air pollution will not just 'go away'.

Every piece of litter and every toxic chemical remains somewhere in the system until it breaks down. Aluminium cans take up to 500 years to decompose, plastics can last thousands of years, and nuclear materials millions of years.

Some human actions have disastrous effects. The burning of coal, oil and wood releases carbon into the atmosphere as CO₂ gas, which contributes to global warming.

Activity – Burning issues

List three actions you can take to protect our planet from rubbish and pollution.

1. _____
2. _____
3. _____