

Voyage from Hawaiki



- You need** a photocopy of the map copymaster a classmate
 a ruler a protractor

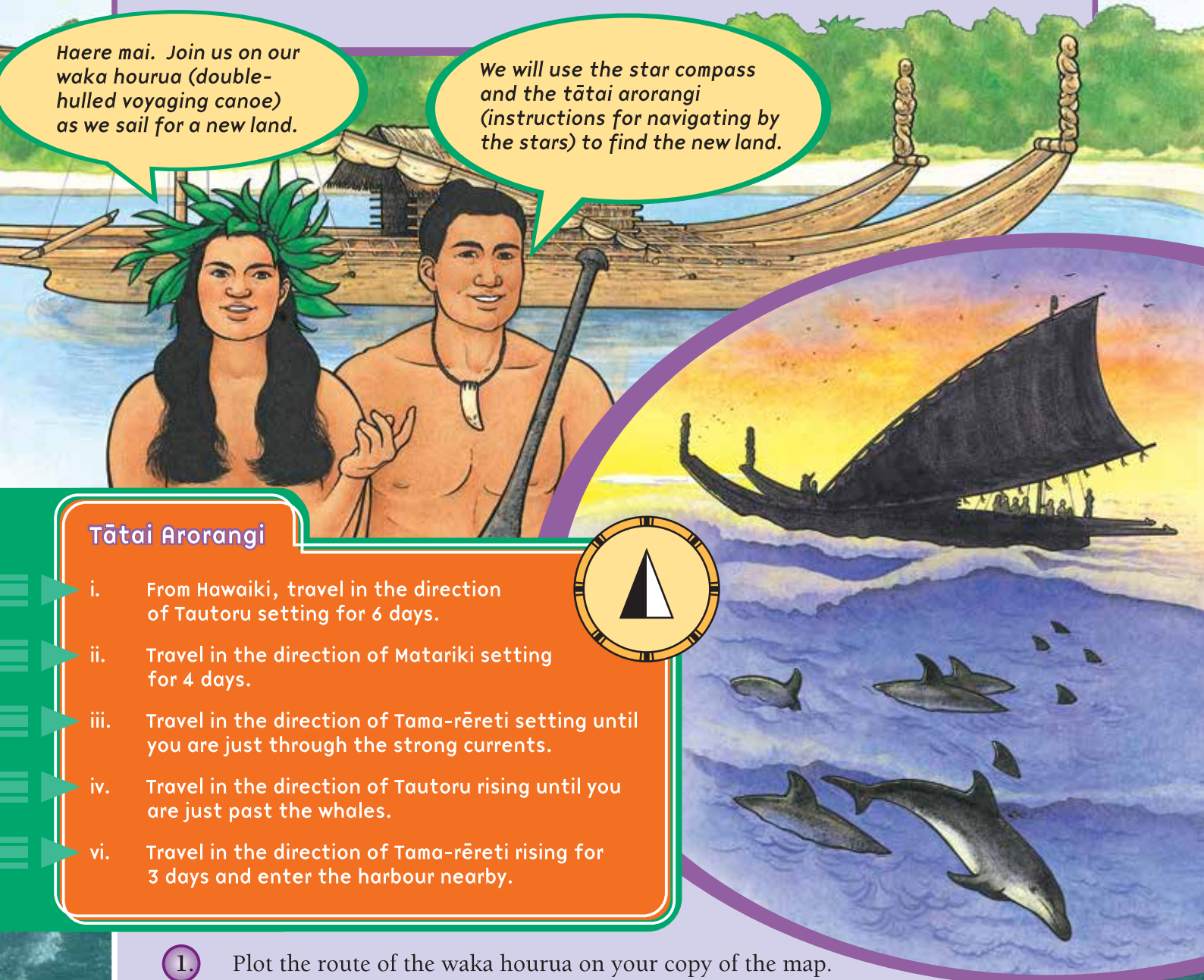
The *Space Waka* travels back about 1 000 years to Hawaiki, the ancestral home of Māori.

Activity One

Māori navigated using the stars. The star compass on page 7 shows where the stars Matariki, Tautoru, and Tama-rēreti rise and set.

Haere mai. Join us on our waka hourua (double-hulled voyaging canoe) as we sail for a new land.

We will use the star compass and the tātai arorangi (instructions for navigating by the stars) to find the new land.



Tātai Arorangi



- i. From Hawaiki, travel in the direction of Tautoru setting for 6 days.
- ii. Travel in the direction of Matariki setting for 4 days.
- iii. Travel in the direction of Tama-rēreti setting until you are just through the strong currents.
- iv. Travel in the direction of Tautoru rising until you are just past the whales.
- vi. Travel in the direction of Tama-rēreti rising for 3 days and enter the harbour nearby.

1. Plot the route of the waka hourua on your copy of the map.
2. When you sailed past the whales, were they on your left or right?
3. Once you reach your destination, work out how many days the journey took.

Star Compass

Matariki setting

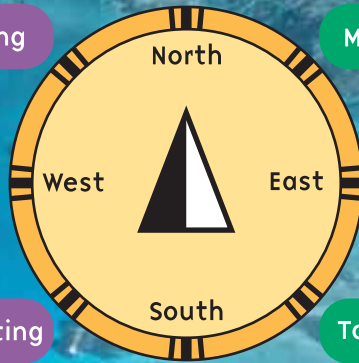
Matariki rising

Tautoru setting

Tautoru rising

Tama-rēreti setting

Tama-rēreti rising



Scale: 1 centimetre : 1 day's travel

Activity Two

After building a pā (fortified village), some of the crew of the waka hourua want to return to Hawaiki.

- Make up a tātai arorangi that gives the crew instructions to sail back to Hawaiki from the new land.
- Give the tātai arorangi to a classmate to draw the journey on their copy of the map.