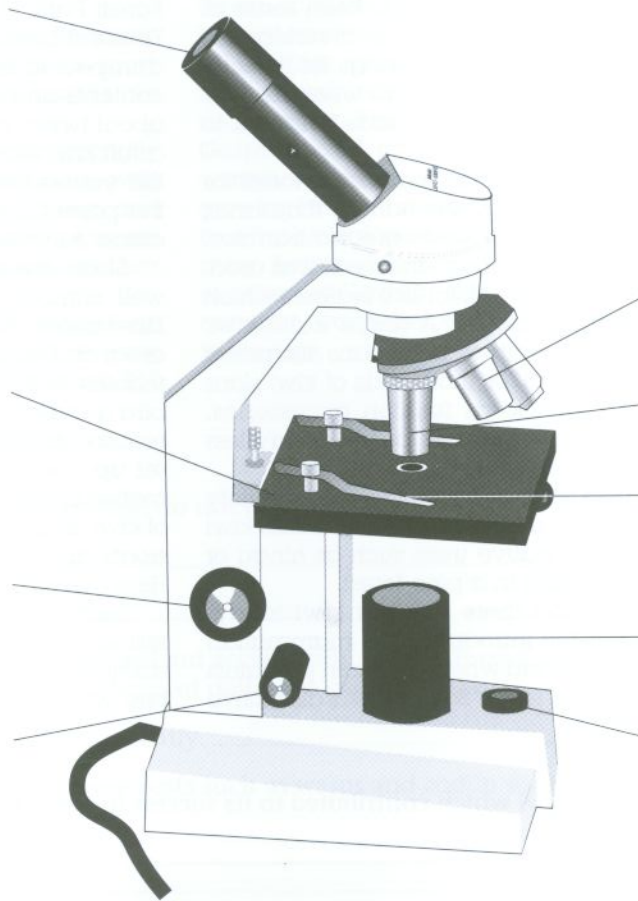


46 The parts of a microscope

K ___/4

1 Label this diagram of a microscope using the labels below. One has been done for you.

- coarse focus knob
- light source
- low power objective lens
- switch
- eye piece
- high power objective lens
- fine focus knob
- stage
- clip



2 Match the parts shown on the diagram with the descriptions below:

- a This part turns on the light.
- b A lens with a large degree of magnification.
- c This part sends light onto the specimen.
- d This part moves the objective lenses up or down.
- e Use this when first viewing the specimen.
- f This holds the slide firmly.
- g This part adjusts the position of the objective lens for the clearest image.
- h The place where the slide is mounted.
- i The part of the microscope you look through.
